



www.bayfieldelectric.com

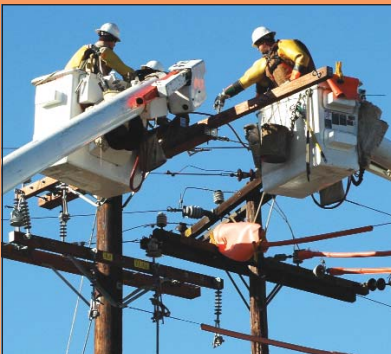
Your Touchstone Energy[®] Cooperative 

AUGUST 2008

CARL MELCHIORS,
GENERAL MANAGER

SARA ANDERSON,
EDITOR

Bayfield Electric Cooperative
P.O. Box 68
Iron River, WI 54847
715-372-4287 or 800-278-0166



HAPPY LABOR DAY!

Our office will be closed on Monday, September 1st in honor of Labor Day.

Have a safe and happy Labor Day!

Our motto has always been and will continue to be that your electric cooperative was founded on people helping people, and we will continue to work together as we work for you!

MEMBER APPRECIATION DAY

Mark your calendar for

Friday, October 3, 2008

and join us for Member Appreciation Day
at our Iron River Office.

We will have a picnic style lunch
from 11:00 a.m. – 2:00 p.m. to help us celebrate
October's Electric Coop Month!

This will be a good time to come and visit with your Board of Directors, Management, Employees and Fellow members of your Cooperative.



Hope to see you there!!

Returned By The Post Office As Undeliverable Capital Credit Checks

Please review the list of names on the last page of this newsletter. These members have returned capital credit checks which were issued in June. *(Checks are only issued when the consumer has moved off of the system.)*

If you know the status or location of any person on the list, please call Jennifer or Gina at 1-800-278-0166 or email jennifer.koivisto@bayfieldelectric.com.

WHY DOESN'T DPC INVEST IN MORE RENEWABLE ENERGY OPTION VERSUS COAL?

As a matter of fact, Dairyland is a leader in renewable energy power supply, with several current and planned "green" energy projects. Dairyland's current renewable energy resources consist of its Evergreen wind program launched in 1998 and operation of its Flambeau Hydroelectric Station.

Dairyland has planned participation in waste-to-energy biomass generating projects utilizing methane gas from dairy and swine farms and landfills. These latest projects are part of Dairyland's ongoing commitment to expand its renewable energy portfolio.

Dairyland has a renewable energy project currently underway in the Eau Claire area. Construction of a renewable energy generation facility will begin at the Seven Mile Creek Landfill this summer. Dairyland has contracted with the landfill owners for methane gas, a natural byproduct of the landfill, to be the fuel used to generate electricity. It will initially generate 3 MW, with planned expansion to 5MW.

Dairyland also promotes conservation through rebates for high efficiency appliances (space and water heating and cooling), farm fans, lighting systems and load management.

Keeping Focused on Rebates and Energy Efficiency

Bayfield Electric is very involved in trying to help members save energy through purchasing energy efficient appliances, re-insulation of homes, and home heating options to help spend dollars wisely.

We had questions from some members about our joining the State of Wisconsin Focus on Energy program. This required charging our members a certain amount and sending the money to the state where they administer the program. It provides grant monies for renewable power projects such as wind and solar as well as rebates for energy efficient appliances, etc.

We compared the Focus on Energy program to Bayfield Electric's incentive programs and rebates and came up with only one significant difference. That being the grant program for renewables. We contacted the rural electric cooperatives in Wisconsin that are a part of Focus on Energy, and found that none of their members had received grant money for renewable projects. It seems that these projects are so expensive that it is difficult for members to justify the investment needed to be eligible for the grant money.

It was with the above information that the BEC board decided to bypass joining Focus on Energy, and enhance and expand our present programs to get the most "bang for the buck".

Next months newsletter will contain a list showing the programs available to members and info on plans to enhance them.

RETURNED BY THE POST OFFICE AS UNDELIVERABLE CAPITAL CREDIT CHECKS

Andrus, Peter	#8693
Attoe, Glenn	#2556
Badciong, Walter	#3584
Bayliss, Alice	#7394
Boroughs, Carole	#4728
Bugni, Don	#8774
Bruington, Kay	#7576
Carlson, Elphie	#6091
Danowski, Joseph	#9142
Drews, Margarite	#4239
Finley, Robert Jr	#3389
Foley, Aile	#6059
Franchek, Albert	#3469
Grage, Glenn	#6694
Hebert, J	#8869
Heine, George	#5916
Hochendoner, Jerome	#5976
Horvat, Paul	#6251
Laine, Waino	#110
Mackie, Herbert	#2945
Matonich, Laverne	#6258
McCutcheon, Hugo Sr	#4196
Nasi, Gerald	#8822
Peterson, Rose	#2617
Piasecki, Thomas	#7377
Pierce, William	#7515
Ranta, Irene	#13
Roberts, Warren	#7671
Rose, Howard	#7075
Simon, John	#6073
Skorich, William	#5069
Skorlinski, Stanley	#5658
Szczygiel, Anthony	#3302
Thomas, Webner	#8623
Tollefson, E. L	#4211
Trowbridge Properties	# 6779
Vanhooser, Jeff	#8922
Whittington, Ishmael	#5113
Wolfe, Richard	#8616
Zavodsky, Adolph	#4664

BILL PAYMENT SITES

Several banks/businesses in the area have been kind enough to accept payments for Bayfield Electric. If you live or do business in any of the following areas, and would like to save a postage stamp, you may drop your payment off (make sure you have your payment stub with you) at:

- Associated Bank in Ashland or Hurley
- Drummond State Bank in Cable or Drummond
- Northern State Bank in Mellen
- Moccasin Trails IGA in Odanah