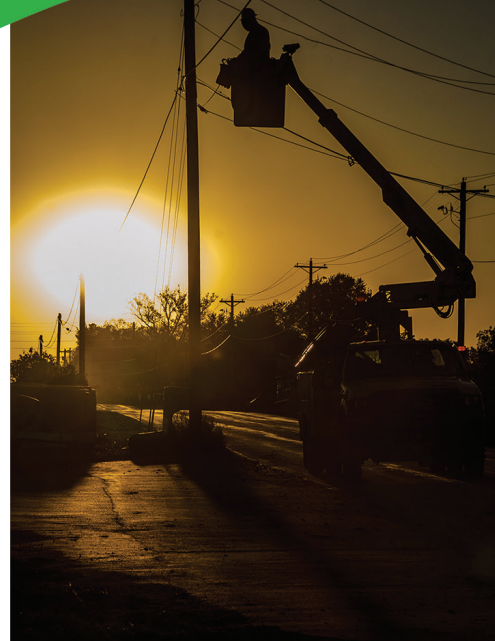


# OCTOBER IS CO-OP MONTH



Bayfield Electric Cooperative is proud to be part of America's cooperative network, which includes more than 47,000 cooperative businesses. Unfortunately, we will not be hosting a Member Appreciation Day this year. Instead, we will be doing a few more fun GIVEAWAYS!

## FIRST GIVEAWAY

### One Apple iPad

How to enter the drawing to win an Apple iPad:

1. Log onto our website, [www.bayfeldelectric.com](http://www.bayfeldelectric.com)
2. Click on "My Account" in the upper right corner of the home screen
3. Create a Smart Hub online access account
4. Enroll in Auto-Pay through the Smart Hub account by October 31, 2021
5. Done!



**If you are already enrolled in auto pay, you are already signed up!**

One winner will be randomly drawn on **November 1, 2021.**

## SECOND GIVEAWAY

### \$50 Bill Credits

Five lucky members will receive a one-time \$50 credit on their November electric bill.

To enter, please answer and return the below survey question by **November 1, 2021**, to PO Box 68, Iron River, WI 54847:

#### 1. Do you currently own a backup generator?

☐ Yes ☐ No

#### 2. If no, in the next 10 years how likely are you to purchase a backup generator?

☐ 1-3 Years ☐ 4-6 Years ☐ 7-10 Years ☐ Never

Member's Name \_\_\_\_\_

Service Address \_\_\_\_\_

Phone Number \_\_\_\_\_

Account number \_\_\_\_\_

*Always let BEC know when you are planning on installing a backup generator or if you have one installed already. It ensures our linemen can restore outages safely.*

# 7

## COOPERATIVE PRINCIPLES

### 1 VOLUNTARY AND OPEN MEMBERSHIP



Cooperatives are voluntary organizations open to all persons able to use their services and willing to accept the responsibilities of membership, without gender, social, racial, political or religious discrimination.

### 2 DEMOCRATIC MEMBER CONTROL



Cooperatives are democratic organizations controlled by their members, who actively participate in setting policies and making decisions. The elected representatives are accountable to the membership. In primary cooperatives, members have equal voting rights (one member, one vote), and cooperatives at other levels are organized in a democratic manner.

### 3 MEMBERS' ECONOMIC PARTICIPATION



Members contribute equitably to, and democratically control, the capital of their cooperative. At least part of that capital is usually the common property of the cooperative. Members usually receive limited compensation, if any, on capital subscribed as a condition of membership. Members allocate surpluses for any or all of the following purposes: developing the cooperative, possibly by setting up reserves, part of which at least would be indivisible; benefitting members in proportion to their transactions with the cooperative; and supporting other activities approved by the membership.

### 4 AUTONOMY AND INDEPENDENCE



Cooperatives are autonomous, self help organizations controlled by their members. If they enter into agreements with other organizations, including governments, or raise capital from external sources, they do so on terms that ensure democratic control by their members and maintain their cooperative autonomy.

### 5 EDUCATION, TRAINING AND INFORMATION



Cooperatives provide education and training for their members, elected representatives, managers and employees so that they can contribute effectively to the development of their cooperatives. They inform the general public, particularly young people and opinion leaders, about the nature and benefits of cooperation.

### 6 COOPERATION AMONG COOPERATIVES



Cooperatives serve their members most effectively and strengthen the cooperative movement by working together through local, national, regional and international structures.

### 7 CONCERN FOR COMMUNITY



While focusing on member needs, cooperatives work for the sustainable development of their communities through policies accepted by their members.

# CREDIT CARD COMPLIANCE PROHIBITS PAYMENTS OVER THE PHONE

Bayfield Electric representatives are unable to take your payment over the phone.

Due to security breaches, credit card companies are requiring tighter security to protect personal information. The Payment Card Industry (PCI) has implemented requirements for credit card payments that have impacted the way Bayfield Electric accepts credit card payments.

Due to these requirements from credit card companies, Bayfield Electric representatives are unable to verbally accept credit card payments by phone. Credit card payments can still be made

over the phone, but instead of talking to a Bayfield Electric representative, you must utilize our interactive voice response system that is PCI compliant by calling 1-855-385-9978. OR our after-hours and overflow answering service, Cooperative Response Center, can also take a payment over the phone. If you call the office wanting to make a credit card payment, you can expect to be transferred over to CRC.

When calling 1-855-385-9978 to make a credit card payment, you will be able to choose prompts to make a payment, check your account status, or edit your stored financial information. If

all you want to do is make a payment, select option #2.

We understand this may cause inconvenience for some of our members. However, it is required to remain in compliance with PCI regulations and avoid very costly penalties while also being safer for our members.

Members may continue to pay by credit card online through Smarthub.

Bayfield Electric personnel are still only a phone call away to answer any questions and concerns, including questions on your electric bill. Thank you for understanding!

## IDLE ELECTRIC SERVICE POLICY

An idle service is any electric account that has been disconnected for a period of time and is not presently paying an electric bill. Unfortunately, with no electric usage, no revenues are generated to help offset maintenance expenses for service. These costs must be shared by other members through their monthly facility charge.

Bayfield Electric has been working to identify the idle services in our service territory as part of our regular line inspections. If our records indicate that an electric service has been idle for one or more years a letter is sent to the property owner. The letter explains their options: They can agree to have the electric service removed at no cost; they can also keep the idle electric service in place by agreeing to pay Bayfield Electric half of the current daily service charge. If an idle service is removed and electric service is requested at some time in future, the work will be done according to line-extension policies for new services.

Other than cost, there's a good reason for removing electric lines and equipment on idle services: safety. The customer's meter socket and electrical equipment often fall into disrepair once electric service is discontinued. It can easily become a safety concern.

**ARE HOME ELECTRONICS AND APPLIANCES DRAINING YOUR ENERGY?**

If you collect your spare change in a jar, all those coins add up over time, usually to a larger amount than you expect.

Small amounts of consumed energy throughout your home add up as well, so plug "energy vampires" into a smart power strip that detects dormant devices or unplug items when not in use, especially those with illuminated controls.

**TOP NINE ENERGY VAMPIRES**

- TVS
- VIDEO GAME CONSOLES
- COMPUTERS
- SURROUND SOUND SYSTEMS
- PRINTERS
- STANDBY COFFEE MAKER
- CELL PHONE AND TABLET CHARGERS
- SATELLITE/CABLE BOXES
- MICROWAVES

Safe Electricity.org<sup>®</sup> **LEARN MORE:**





# BAYFIELD APPLE FESTIVAL IS BACK

October 1-3, 2021

Join us this fall for the Bayfield Apple Festival! Celebrate the autumn harvest and Bayfield's agricultural heritage, tour the orchards and wineries, peruse fine arts and crafts while sampling local foods at many food booths. Live music will be spread out throughout the festival.

Special events include the crowning of the Apple Queen, an apple-peeling contest, and a Saturday evening fish fry at the historic Bayfield Lakeside Pavilion. The festival culminates with the grand parade marching down historic Rittenhouse Avenue, to Lake Superior. Mask wearing is recommended.



## Did you know?

- Apple fest has been one of Wisconsin's premiere festivals for 59 years, located on the shores of Lake Superior in Bayfield, which is honored by the *Chicago Tribune* as the Best Little Town in the Midwest and *Smithsonian Magazine* as one of America's Best Small Towns.
- It has been touted by *USA Today* as one of the 10 Best Fall Harvest Festivals in the nation and by *Wisconsin Trails* magazine as Wisconsin's Best Festival.

## A FALL CLASSIC YOU WON'T WANT TO MISS!



### Memorial Medical Center Whistlestop Marathon and Half-Marathon October 9, 2021

What better way to see the start of fall colors and leaves changing than to participate in the Whistlestop Marathon or Half-Marathon? The course begins in Iron River and finishes in Ashland on Lake Superior's South Shore. Other festival events include live music and local restaurant specials.

Visit [www.whistlestopmarathon.com](http://www.whistlestopmarathon.com)  
for more information.

## Energy Efficiency Tip of the Month

Old, uninsulated and improperly installed exterior doors can waste energy and money.

Shut the door on wasted energy by weather stripping and sealing all exterior doors. If you have an old exterior door, consider replacing it with a newer, energy efficient model.



Source: [www.energy.gov](http://www.energy.gov)

## MONTH OF OCTOBER

Billing date: October 8, 2021

September usage

Bills due upon receipt:

October 28, 2021

Disconnect day:

October 13, 2021

### Christopher Kopel, CEO


68460 District St., P.O. Box 68, Iron River, WI 54847  
715-372-4287 • Fax: 715-372-4318  
[www.bayfeldelectric.com](http://www.bayfeldelectric.com)

Payment by Phone: 855-385-9978  
After Hours Outage: 715-372-4047

### Briana Green, Editor



Bayfield Electric  
Cooperative

Your Touchstone Energy® Cooperative 

Office Hours: 7:30 a.m.–4:00 p.m., Monday–Friday

*This institution is an equal opportunity provider and employer.*

